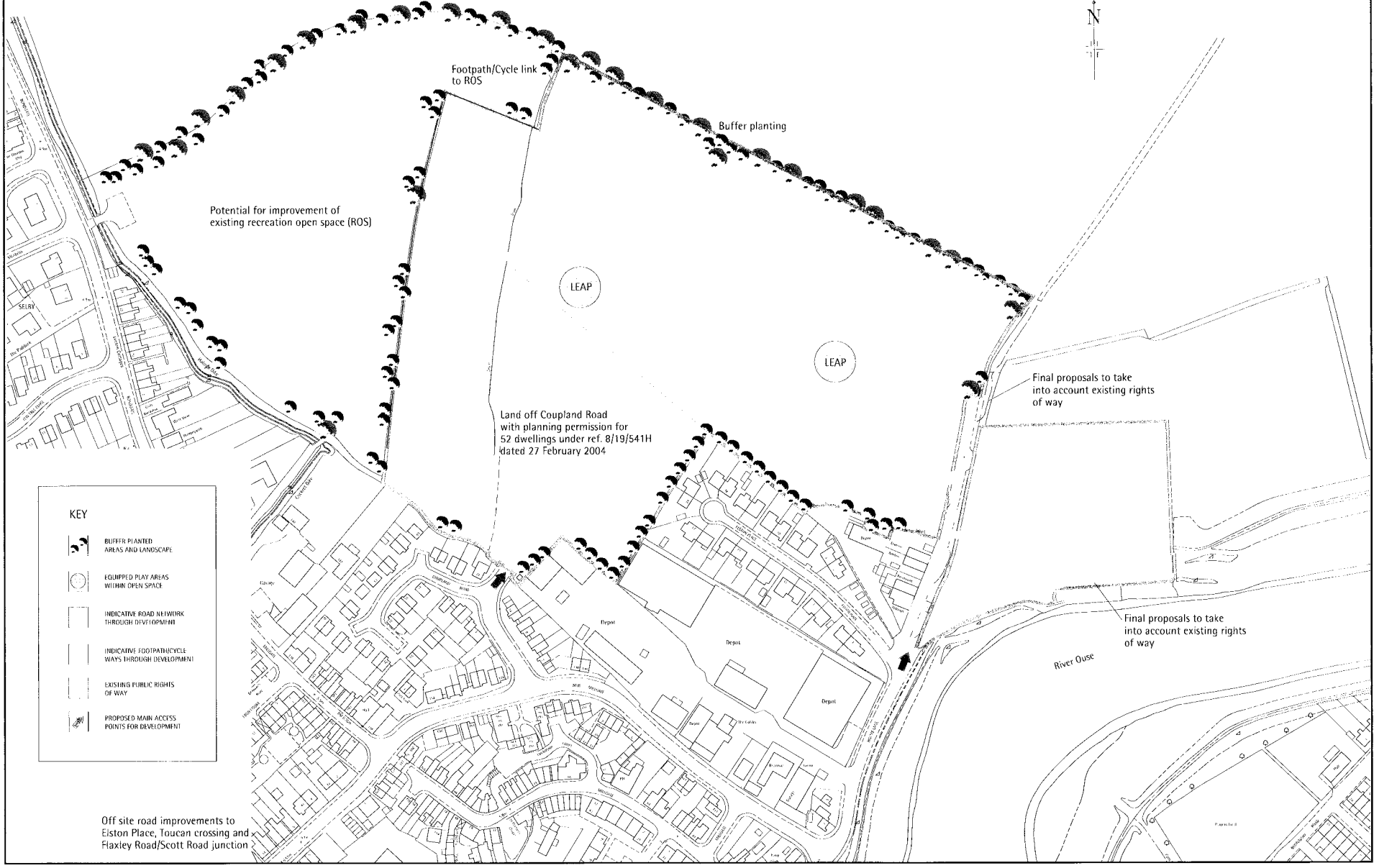


# INDICATIVE PLAN – HOLME LANE SELBY

## Plan 3



Potential for improvement of existing recreation open space (ROS)

Footpath/Cycle link to ROS

Buffer planting

LEAP

LEAP

Land off Coupland Road with planning permission for 52 dwellings under ref. 8/19/541H dated 27 February 2004







Final proposals to take into account existing rights of way

Final proposals to take into account existing rights of way

River Ouse

Off site road improvements to Elston Place, Toucan crossing and Flaxley Road/Scott Road junction

**KEY**

-  BUFFER PLANTED AREAS AND LANDSCAPE
-  EQUIPPED PLAY AREAS WITHIN OPEN SPACE
-  INDICATIVE ROAD NETWORK THROUGH DEVELOPMENT
-  INDICATIVE FOOTPATH/CYCLE WAYS THROUGH DEVELOPMENT
-  EXISTING PUBLIC RIGHTS OF WAY
-  PROPOSED MAIN ACCESS POINTS FOR DEVELOPMENT